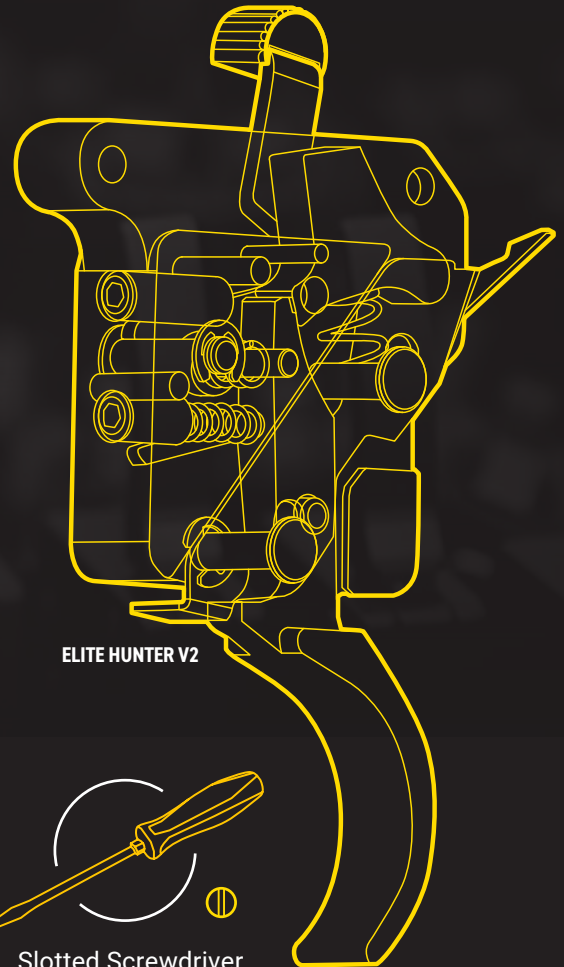




REMINGTON 700 INSTALLATION INSTRUCTIONS

Thank you for purchasing this Timney Trigger. It has been designed and manufactured to provide you with a lifetime of dependable service. Each trigger is hand tested and calibrated on an action specific to your platform before leaving our factory. **Please read these instructions fully** before you begin installing the trigger, you'll be glad you did.



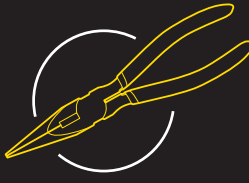
TOOLS NEEDED:



Straight Punch



Small Hammer



Needle Nose Pliers



Slotted Screwdriver
OR SAE Hex Wrenches

TIMNEY TRIGGER GUARANTEE

Material and workmanship: This Timney trigger has been carefully inspected, tested and adjusted to give a lifetime of dependable service. Every possible care has been exercised in its design and construction. If any defect in workmanship or material should develop under conditions of normal use and service, any necessary repairs, including parts and labor will be made at NO CHARGE to the purchaser providing that our inspection reveals parts were not damaged through accident, alteration, misuse, abuse or other causes beyond our control. We neither assume nor imply any oral or statutory warranties, and we neither assume nor authorize any person to assume for us any obligation or liability in connection with this trigger. Repairs or disassembly of this trigger in any manner without specific authorization, voids the guarantee.

**IF YOU HAVE TROUBLE CHECK OUT TROUBLESHOOTING STEPS ON
WWW.TIMNEYTRIGGERS.COM OR CONTACT US**

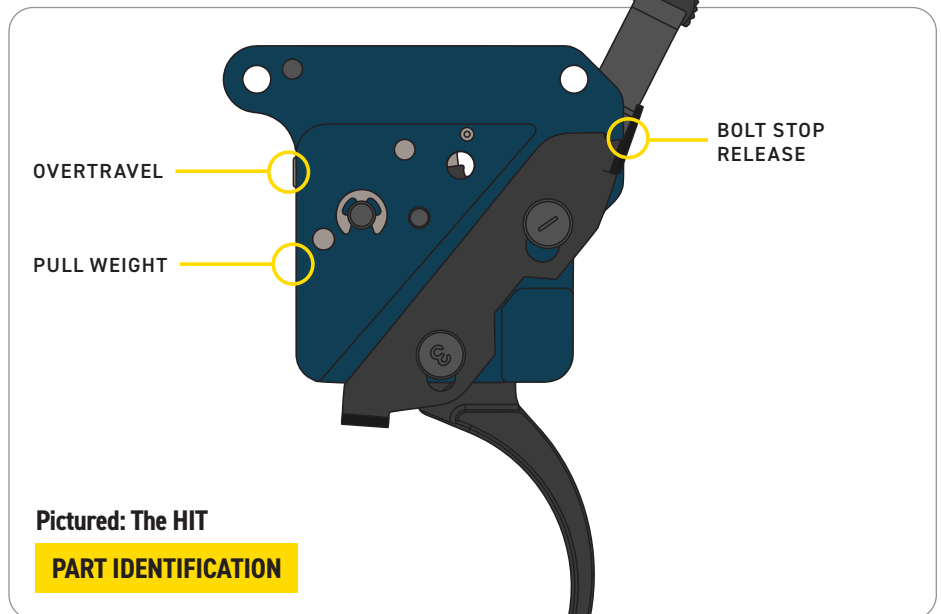
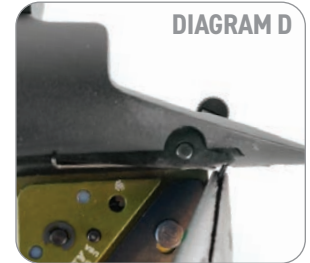
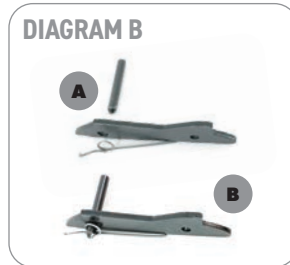
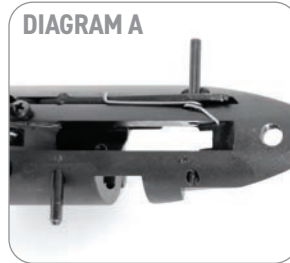
Timney can also install your trigger for \$40.00 plus \$35.00 shipping and handling.

Mail: 2020 W Quail Ave, Phoenix AZ. 85027 Phone: 623-223-1111 Fax: 623-223-1112 Support: technicalsupport@timneyusa.com

INSTALLATION INSTRUCTIONS

- 1** Before beginning work on any firearm, remove the ammunition source and double check to ensure the chamber is empty.
- 2** Remove the bolt from the action and the action from the stock.
- 3** Once the safety lever is engaged, tap the front trigger pin from left to right until the trigger assembly is clear. Tap rear pin from right to left – be cautious not to go too far because you risk releasing the bolt stop and spring. (Diagram A)
- 4** Insert your new Timney Trigger and tap the front pin back into place. When tapping in the pin, avoid hitting the bolt stop with too much force. The bolt stop should move freely when bolt release is depressed. (Diagram A)
- 5** Line up your rear pin with a punch and tap it in until it is flush with the bolt release. (Diagram C)
- 6** Adjust the bolt release so it moves the bolt stop without any binding. Do this by very slightly bending the tip with needle nose plier so it perfectly engages the notch in the bolt stop. (Diagram D and E)
- 7** Reinstall action in stock, reinstall bolt in action, and check the trigger for proper functionality.
- 8** You are now ready to enjoy your Timney Trigger!

Note: If the bolt stop and spring come out during the installation process, refer to Diagram B on how to fit them together. Hook one spring end into the trigger recess and the other on the bottom of the bolt stop.



Pictured: The HIT

PART IDENTIFICATION

TRIGGER ADJUSTMENT GUIDE

OVERTRAVEL:

1. Remove the ammunition source and double check to ensure the chamber is empty. Pointing the barrel away from yourself, dry fire the trigger.
2. Carefully tighten the overtravel screw in until it hits the trigger, then back it out about 1/6 of a turn (or one flat of the hex wrench).
3. It should move freely and fire with ease. You shouldn't have to "chase" the trigger more than about .015.

PULL WEIGHT ADJUSTMENT:

NOTE: Please be careful as you adjust the pull weight. It is important that you do NOT take the pull weight too low; it must maintain spring pressure or else it will bump/slam fire. When you pull the trigger, with the bolt open, the trigger's spring should return it to the neutral position; if it doesn't, then you do not have enough spring pressure.

1. To adjust spring pressure, turn the screw clockwise until you can feel the pressure of the spring on the actual trigger lever.

IF YOU HAVE TROUBLE CHECK OUT TROUBLESHOOTING STEPS ON WWW.TIMNEYTRIGGERS.COM OR CONTACT US

Timney can also install your trigger for \$40.00 plus \$35.00 shipping and handling. **Mail:** 2020 W Quail Ave, Phoenix AZ. 85027
Phone: 623-223-1111 **Fax:** 623-223-1112 **Support:** technicalsupport@timneyusa.com

